



## Installing Your Wired Asset Tracker

- 1 You have purchased a wired asset tracker device which contains an internal rechargeable battery. This battery may not be fully charged when you first receive it. In order to register and activate this device, please either charge the asset tracker device for a minimum of four hours, or wire the device for installation to an appropriate power source.

You have two options when it comes to the installation of your AT3 CommandGPS asset tracker. You can wire the tracker to constant power, enabling continuous 10 minute tracking updates. Or, you can wire the tracker to an ignition, enabling 10 minute updates with the ignition on and once a day updates when the ignition is off. Wiring the device to the ignition will allow you to track usage hours and receive unauthorized use alerts.



The AT3 asset tracker has a series of wires, but you only need to attach three. (The additional wires are for future functions.) The three wires you need are: the red wire (power), the white wire (ignition), and the black wire (ground).

### To wire to constant power:

- a. If available, obtain the wiring diagram online or from your owner's manual. Find the constant power wire on your equipment. Strip this wire.
- b. Strip the asset tracker's red and white wires, then connect them to the constant power wire from your equipment and crimp. This connection provides power to the device.
- c. Strip the asset tracker's black wire and connect it to a grounded source.
- d. Using screws, zip ties or tape, secure the device to your asset.

### To wire to ignition:

- a. If available, obtain the wiring diagram online or from your owner's manual. Find the ignition wire on your asset. Verify the ignition wire by measuring the operating voltage while the key is in the ON or START position (voltage should read 0VDC when OFF, and typically between 11V and 14V when ON). Strip this wire.
- b. Strip the asset tracker's red and white wires, then connect the white wire to the ignition source and the red wire to constant power. This connection lets the asset tracker report ignition ON/OFF events.
- c. Strip the asset tracker's black wire and connect it to a grounded source.
- d. Using screws, zip ties or tape, secure the device to your asset.

## 2 Confirm the power connection.

Following installation, allow 5-10 minutes for the CommandGPS asset tracker to power up and obtain a cellular and GPS fix. Your asset must be outside and not in a covered area so that it will receive GPS signal. Once you have LED confirmation of power, your installation is complete.

**STOP**

**WE'RE CONFIDENT WE CAN MAKE IT RIGHT!**

If you have any questions or problems with your GPS tracker, please give us a call before you make a return. CommandGPS Customer Support Phone: 1-877-865-2570  
Email: [support@commandgps.com](mailto:support@commandgps.com)

Visit [www.commandgps.com/sprint/atinstall](http://www.commandgps.com/sprint/atinstall)  
for a video tutorial of these installation steps

# Get to Know the CommandGPS System



## Setup

Customize the CommandGPS system to make it work best for you.

**Device Setup**  
Below is a list of your devices. You can click the names and VIN to edit them. All changes are automatically saved.

First Name	Last Name	Group	VIN	Notes
Dan	Rogers	East Coast	JTDBR32E770124589	
Kenn	Smith	Midwest	JF8A8PH158000000000	

Click to edit.



## Alerts

Use the Alerts section to review all alerts that occur within defineable dates.

Date	Type	Location	Description
Mar 14, 2017 04:34 PM	Geofence Alert	2167 Old State Rd., Glencoe, MO 63038, USA	Exited geofence Large Geofence
Mar 14, 2017 04:24 PM	Geofence Alert	352-372 Clarkson Rd., Ellisville, MO 63011, USA	Exited geofence Equipment
Mar 14, 2017 04:24 PM	Speeding Alert	352-372 Clarkson Rd., Ellisville, MO 63011, USA	Demo BN151200124 is traveling in a posted speed zone (Heading North)
Mar 14, 2017 09:49 AM	Geofence Alert	Chester Field Ridge Dr., Chesterfield, MO 63017, USA	Entered geofence Equipment
Mar 14, 2017 09:39 AM	Speeding Alert	800-856 MO-141, Ballwin, MO 63011, USA	Demo BN151200124 is traveling in a posted speed zone (Heading North)
Mar 14, 2017 09:39 AM	Geofence Alert	800-856 MO-141, Ballwin, MO 63011, USA	Entered geofence Large Geofence
Mar 14, 2017 08:37 AM	Geofence Alert	1400-1404 MO-141, Fenton, MO 63026, USA	Exited geofence Large Geofence
Mar 14, 2017 08:18 AM	Geofence Alert	N Outer 40 Rd., Chesterfield, MO 63017, USA	Exited geofence Equipment
Mar 14, 2017 06:34 AM	Geofence Alert	Chester Field Ridge Dr., Chesterfield, MO 63017, USA	Entered geofence Equipment
Mar 14, 2017 06:26 AM	Geofence Alert	2670 Clarkson Rd., Chesterfield, MO 63017, USA	Entered geofence Large Geofence
Mar 14, 2017 06:05 AM	Ignition Alert	1638 Grace View Dr., Eureka, MO 63025, USA	started its ignition for the first time
Mar 13, 2017 06:17 PM	Geofence Alert	4525 MO-109, Eureka, MO 63001, USA	Exited geofence Large Geofence
Mar 13, 2017 06:07 PM	Geofence Alert	15991 Historic U.S. 66, Ellisville, MO 63011, USA	Exited geofence Equipment
Mar 13, 2017 06:24 AM	Geofence Alert	Chester Field Ridge Dr., Chesterfield, MO 63017, USA	Entered geofence Equipment

Click the address to see the location on a map.



## Usage Hours

Track usage hours to get the most out of your equipment, decrease idle times, and create more accurate billing.

**Usage Hours Report**

Date Range: Mar 1, 2017 - Mar 14, 2017 | Group: All | Asset: Demo BN151200124 | Show Activity

Start Time	Start Location	End Time	End Location	Time	Time at Location
Mar 01, 2017 05:45 AM	1638 Grace View Dr., Eureka, MO 63025, USA	Mar 01, 2017 06:13 AM	Chester Field Ridge Dr., Chesterfield, MO 63017, USA	28m	10h 3m
Mar 01, 2017 04:16 PM	Chester Field Ridge Dr., Chesterfield, MO 63017, USA	Mar 01, 2017 04:47 PM	837 Ashton Way Cir., Eureka, MO 63025, USA	31m	13h 28m
Mar 02, 2017 06:16 AM	1638 Grace View Dr., Eureka, MO 63025, USA	Mar 02, 2017 06:43 AM	Chester Field Ridge Dr., Chesterfield, MO 63017, USA	27m	10h 43m
Mar 02, 2017 05:26 PM	Chester Field Ridge Dr., Chesterfield, MO 63017, USA	Mar 02, 2017 06:00 PM	290 E 4th St., Eureka, MO 63025, USA	34m	2m
Mar 02, 2017 06:02 PM	290 E 4th St., Eureka, MO 63025, USA	Mar 02, 2017 06:09 PM	837 Ashton Way Cir., Eureka, MO 63025, USA	6m	11h 56m
Mar 03, 2017 06:05 AM	837 Ashton Way Cir., Eureka, MO 63025, USA	Mar 03, 2017 06:11 AM	290 E 4th St., Eureka, MO 63025, USA	6m	2m
Mar 03, 2017 06:13 AM	290 E 4th St., Eureka, MO 63025, USA	Mar 03, 2017 06:35 AM	Chester Field Ridge Dr., Chesterfield, MO 63017, USA	22m	9h 37m
Mar 03, 2017 04:13 PM	Chester Field Ridge Dr., Chesterfield, MO 63017, USA	Mar 03, 2017 04:24 PM	1540 Clarkson Rd., Chesterfield, MO 63017, USA	11m	1h 33m
Mar 03, 2017 05:58 PM	1540 Clarkson Rd., Chesterfield, MO 63017, USA	Mar 03, 2017 06:01 PM	1540 Clarkson Rd., Chesterfield, MO 63017, USA	3m	1h 7m



## Maintenance

Make equipment maintenance easier with scheduled maintenance reminders.

**Active Maintenance Reminders**

Vehicle	Service Type	Service Interval	Next Service Due
Vehicle 2	General Service	Every 15,000 miles	9,902 miles overdue
Vehicle 4	Preventive Maintenance	Every 5,000 miles	543 miles overdue
Vehicle 1	Oil Change	Every 120 days	6 days overdue
Vehicle 2	General Service	Every 10 days	4 days to go
Vehicle 3	General Service	Every 30 days	30 days to go
Vehicle 1	Tire Rotation	Every 10,000 miles	10,000 miles to go
Vehicle 4	Scheduled Service	Every 10,000 miles	10,000 miles to go
Vehicle 1	Scheduled Service	Every 10,000 miles	10,000 miles to go
Vehicle 1	Preventive Maintenance	Every 5,000 miles	5,000 miles to go
Vehicle 2	Preventive Maintenance	Every 5,000 miles	5,000 miles to go
Vehicle 2	Preventive Maintenance	Every 5,000 miles	5,000 miles to go



## Map

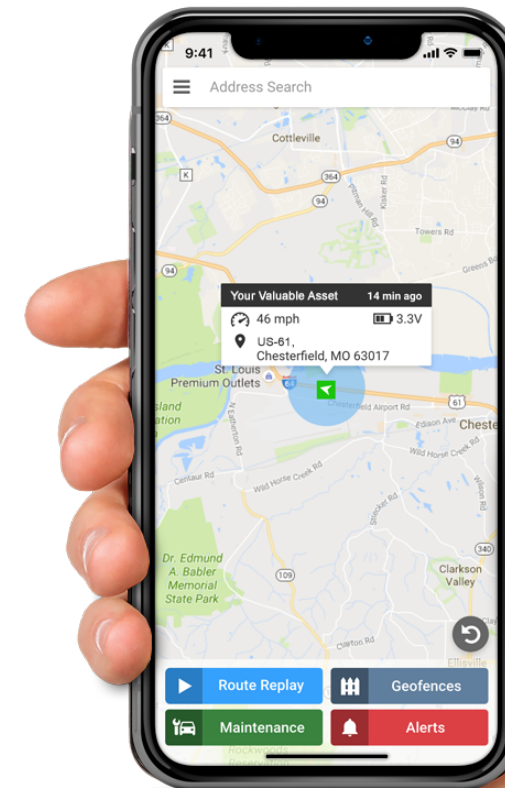
Locate your asset at all times, view its history, and manage your geofences.

Need help? Click the 'Help' icon, sign up for a webinar, or connect with a customer service agent.

A geofence can be an office, job-site, or a restricted area and is a virtual boundary on the map.

Use Route Replay to review where your asset has been

Locate your asset at all times.



## Download now! CommandGPS Mobile App

Track and monitor your equipment with:  
Real-time GPS tracking  
Route Replay  
Alerts

