

Quick Start Guide
OBD PLUG

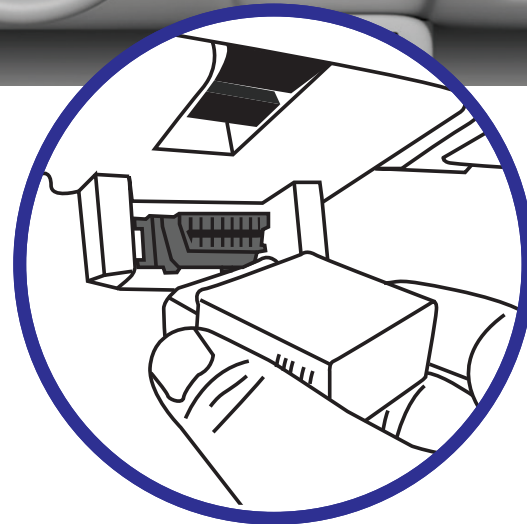


Install Your CommandGPS Tracking Device

1 Locate the OBDII port of your vehicle and connect your device.

If you need help locating the connector, please reference your vehicle's owner manual.

You may use the enclosed zip tie to secure the device and prevent tampering.



When removing the device from your vehicle, make sure you grasp the device as close to the port as possible.



WE'RE CONFIDENT WE CAN MAKE IT RIGHT!
If you have any questions or problems with your GPS tracker, please give us a call before you make a return.

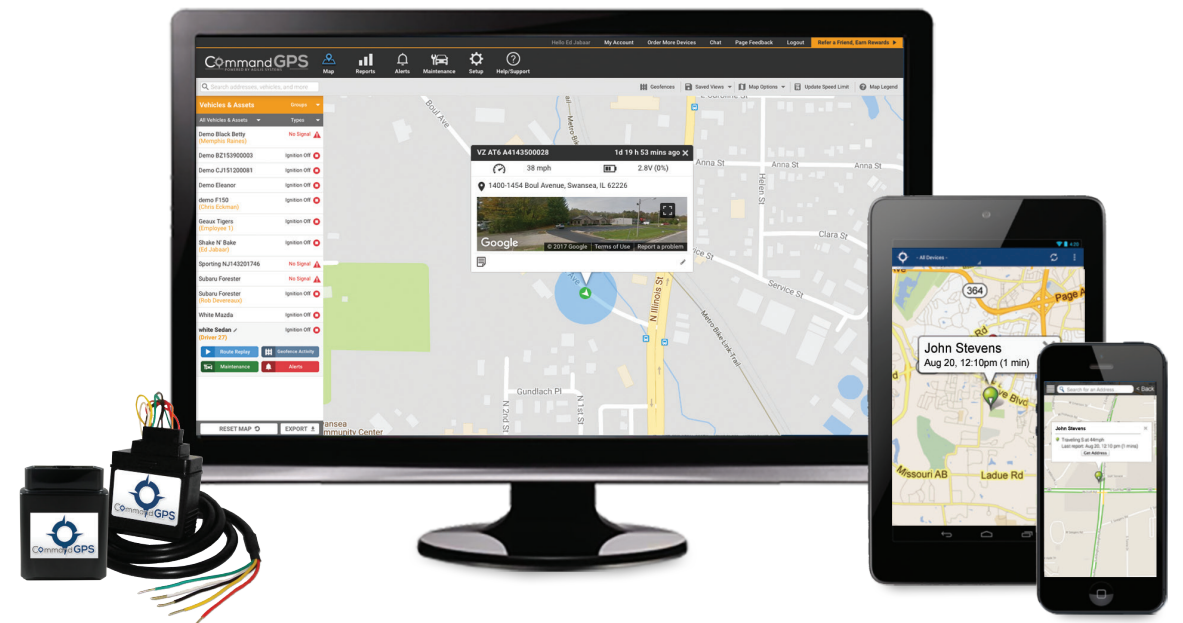
CommandGPS Customer Support
Phone: 1-877-865-2570
Email: support@commandgps.com

2 Start your vehicle, and check the lights on the GPS.

Cell (Orange)	Fast Blinking	Searching for a cell network
	Slow Blinking	Connected to network
	Off	Cell modem off (sleep mode), or disconnected
(Blue)	Internal Use Only	
GPS (Green)	Blinking	GPS lock (connected to satellites)
	Off	No GPS signal / Acquiring satellites

Your vehicle must be outside and not in a covered area so that it will receive GPS signal. When working properly, the orange and green lights will be on. You should see your car's location on the map (may take up to two hours).

3 Once your device is installed, login to the CommandGPS web site. You should see your car's location on the map (may take up to two hours). Your installation is complete. **(Please note: Your device monthly service plan is active upon delivery of the device, not installation.)**



IMPORTANT NOTICE: remove device before jump starting the vehicle.

Get to Know the CommandGPS System



Setup

Customize the CommandGPS system to make it work best for you.



Alerts

Use the Alerts section to review all alerts that occur within defineable dates.

Date	Type	Location	Description
May 12, 2016 04:09 PM	Idle Alert	4510-4518 Flad Ave, St. Louis, MO 63110, USA	Vehicle has been idling for 10 min
May 12, 2016 04:05 PM	Speeding Alert	1057 S Vandeventer Ave, St. Louis, MO 63110, USA	Demo 352648066758764 mph posted speed zone (H)
May 12, 2016 03:53 PM	Speeding Alert	I-64, St. Louis, MO 63131, USA	Demo 352648066758764 mph posted speed zone (H)
May 12, 2016 03:46 PM	Tamper Alert	12613 Olive Blvd, Creve Coeur, MO 63141, USA	Tracking device was reconnected after it had been tampered with
May 12, 2016 03:46 PM	Ignition Alert	No Location Available	Vehicle started its ignition



Report

Review all fleet reports from the fleet activity dashboard.



Maintenance

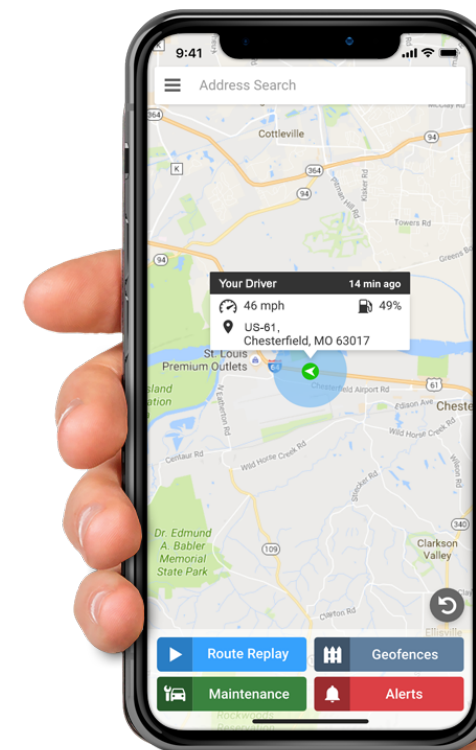
Make vehicle maintenance easier with scheduled maintenance reminders.

Vehicle	Service Type	Service Interval	Next Service Due
Vehicle 2	General Service	Every 15,000 miles	9,902 miles overdue
Vehicle 4	Preventive Maintenance	Every 5,000 miles	543 miles overdue
Vehicle 1	Oil Change	Every 120 days	6 days overdue
Vehicle 2	General Service	Every 10 days	4 days to go
Vehicle 3	General Service	Every 30 days	30 days to go
Vehicle 1	Tire Rotation	Every 100 miles	100 miles to go
Vehicle 4	Scheduled Service	Every 100 miles	100 miles to go
Vehicle 2	Scheduled Service	Every 100 miles	100 miles to go
Vehicle 1	Preventive Maintenance	Every 100 miles	100 miles to go
Vehicle 2	Preventive Maintenance	Every 100 miles	100 miles to go



Map

Locate your vehicle at all times, view its history, and manage your geofences.



Download now! CommandGPS Mobile App

Track and monitor fleet driving with:
Alerts
Real-time GPS tracking
Driving report card

