

WIRED

Quick Start Guide



CommandGPS
POWERED BY AGILIS SYSTEMS



WE'RE CONFIDENT WE CAN MAKE IT RIGHT!

If you have any questions or problems with your GPS tracker, please give us a call before you make a return.
CommandGPS Customer Support Phone: 1-877-865-2570
Email: support@commandgps.com

Install Your CommandGPS Tracking Device

- 1 Wiring the device into a vehicle is easy, and requires installation inside the passenger compartment of the vehicle. The CommandGPS wired device has a series of wires — you will only need to attach three of these wires to your vehicle (the additional wires are for future features or functions). The three wires you need are: the red wire (power), the longer of the two black wires (ground) and the white wire (ignition sense).
 - a. Find the constant red power wire in your vehicle. Cut and strip this wire.
 - b. Cut and strip the red wire on the CommandGPS device.
 - c. Connect the two red wires and crimp. This connection provides power to the device.
 - d. Connect the CommandGPS black wire to your vehicle's chassis. This connection serves as a ground for the device.
 - e. Locate the vehicle's ignition wire (reference the vehicle's wiring diagram in order to locate).
 - f. Verify the ignition wire by measuring the operating voltage while the key is turned to the ON or START position (the voltage should read 0 VDC when the key is in the off position, and typically between 11V and 14V when in the ON position).
 - g. Connect the white wire on the CommandGPS device to the vehicle's ignition wire. This connection allows the device to report ignition OFF and ON events.
 - h. An optional plastic zip tie is included to secure the device under the vehicle dash with the label that reads "Label Side Down" facing down.

- 2 Confirm the power connection

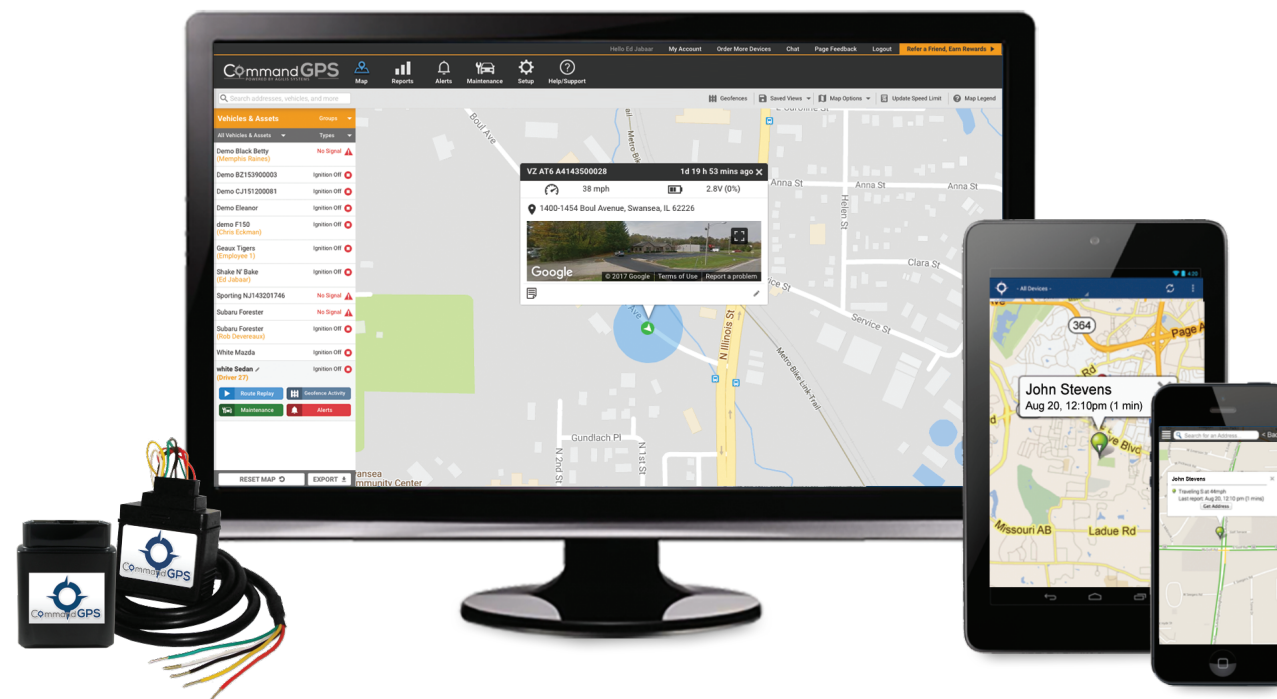
Following installation, allow 5-10 minutes for the CommandGPS device to power up and obtain a cellular and GPS fix. Your vehicle must be outside and not in a covered area so that it will receive GPS signal. When working properly, the blue light will blink once every 3 seconds and you will see a blinking green light.



Cell (Blue)	Blinking 1x/second	Searching for a GSM network
	Blinking 1x/3seconds	GSM lock (connected to network)
	Off	Modem reboot
GPS (Green)	Solid	Searching for satellite
	Blinking	GPS lock (connected to satellite)

You should see your car's location on the map (may take up to two hours). Please note: Your device monthly service plan is active upon delivery of the device, not installation.

Visit www.commandgps.com/wiredinstall to watch a video on the installation process.



CommandGPS
POWERED BY AGILIS SYSTEMS

Please note: Should your vehicle require a jump start, you will have to replace the fuse in the wiring harness with a 3 volt fuse.

Get to Know the CommandGPS System



Setup

Customize the CommandGPS system to make it work best for you.



Alerts

Use the Alerts section to review all alerts that occur within defineable dates.

Date	Type	Location	Description
May 12, 2016 04:09 PM	Idle Alert	4510-4518 Flad Ave, St. Louis, MO 63110, USA	Vehicle has been idling for
May 12, 2016 04:05 PM	Speeding Alert	1057 S Vandeventer Ave, St. Louis, MO 63110, USA	Demo 352648066758764 mph posted speed zone (H
May 12, 2016 03:53 PM	Speeding Alert	I-64, St. Louis, MO 63131, USA	Demo 352648066758764 mph posted speed zone (H
May 12, 2016 03:46 PM	Tamper Alert	12613 Olive Blvd, Creve Coeur, MO 63141, USA	Tracking device was reconf
May 12, 2016 03:46 PM	Ignition Alert	No Location Available	Vehicle started its ignition f



Report

Review all fleet reports from the fleet activity dashboard.



Maintenance

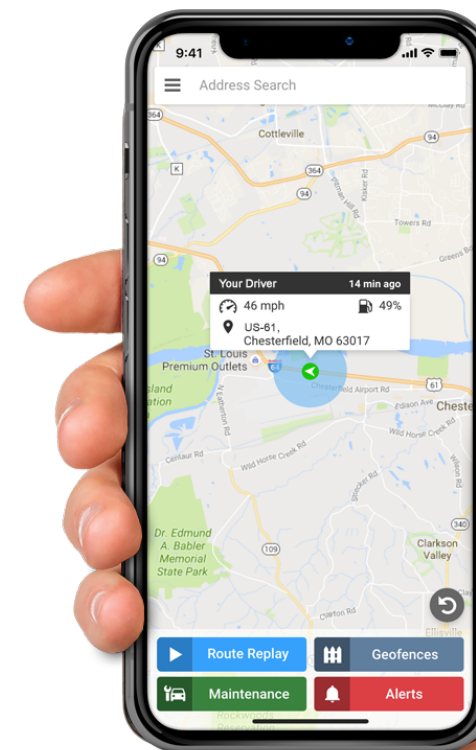
Make vehicle maintenance easier with scheduled maintenance reminders.

Vehicle	Service Type	Service Interval	Next Service Due
Vehicle 2	General Service	Every 15,000 miles	9,902 miles overdue
Vehicle 4	Preventive Maintenance	Every 5,000 miles	543 miles overdue
Vehicle 1	Oil Change	Every 120 days	6 days overdue
Vehicle 2	General Service	Every 10 days	4 days to go
Vehicle 3	General Service	Every 30 days	30 days to go
Vehicle 1	Tire Rotation		to go
Vehicle 4	Scheduled Service		
Vehicle 2	Scheduled Service		
Vehicle 1	Preventive Maint		
Vehicle 2	Preventive Maint		



Map

Locate your vehicle at all times, view its history, and manage your geofences.



Download now! CommandGPS Mobile App

Track and monitor
fleet driving with:
Alerts
Real-time GPS tracking
Driving report card

