

Step 1

The CommandGPS device is easy to install. First unpack the device.

Step 2




Locate the OBDII connector in your vehicle (the connector is located under the dash and is required to be within two feet of the steering wheel). If you cannot locate the OBDII connector, please reference your vehicle's owner manual.

Step 3

Plug the CommandGPS device into the OBDII connector in your vehicle. The first time you plug-in the device, you will need to start your car in order for the GPS tracking to start and for your vehicle to

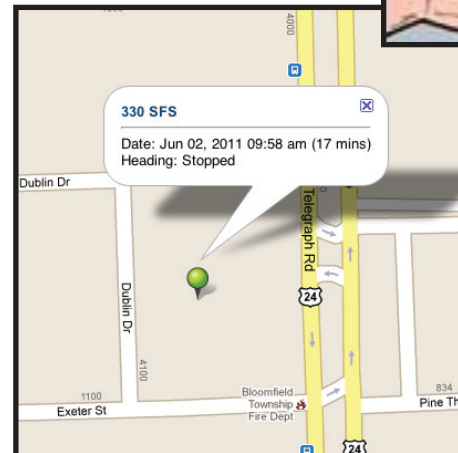
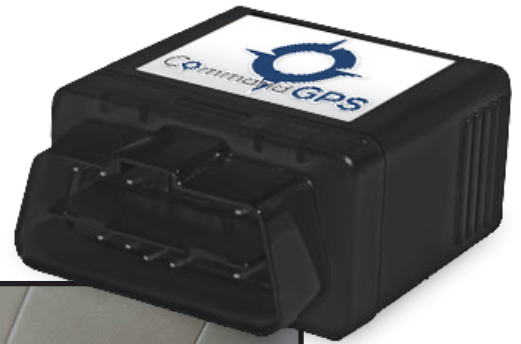
show up in the Web site. Use the LED indicators to ensure that you have good GPS and Cellular signals.



 OBD (Orange)	Off	Ignition's Off
	Blinking	Ignition's On
 Cell (Blue)	Blinking 1x/second	Searching for Cellular Network
	Blinking 1x/3seconds	Cellular Lock
	Off	Modem Reboot
 GPS (Green)	Solid	Searching for Satellite
	Blinking	GPS Lock

Step 4

Once your device is installed, login to the CommandGPS Web site. You should see your car's location on the map.



Your Installation is Complete.

PLEASE NOTE:

Your device monthly service plan is active upon delivery of the devices, not installation.

If you have difficulties or questions (including billing inquiries), please contact Customer Support:
 Phone: 1-877-865-2570
 Email: support@commandgps.com